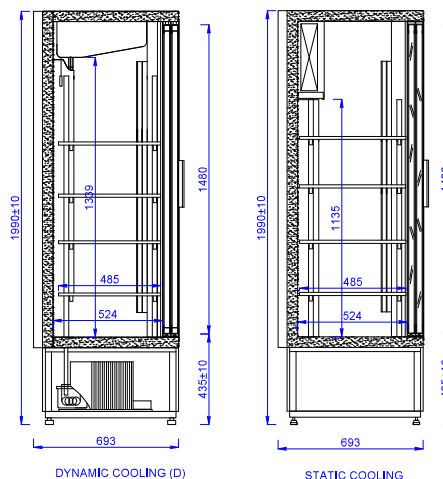


CC 2070 SGD (SCH 2000R)



DYNAMIC COOLING (D)

STATIC COOLING

STANDARD EQUIPMENT

- Built-in refrigeration unit
- Body is insulated with polyurethane foam
- Sliding glass door with combined glass
- Gravitational cooling
- Electronic thermostat with digital display
- Automatic evaporation of condensate (does not apply to cabinets with aggregate at the top)
- Interior of the cabinet made of aluminium sheet
- Outer body varnished in white
- Twelve steel mesh shelves in white colour with adjustable height suspension
- LED interior lighting

AVAILABLE OPTIONS

OPTIONS	UNIT
Forced cooling	set
Additional shelf with a set of hooks	pcs
Stainless steel perforated shelf	pcs
LED lighting in the angular profile on the sides of the cabinet	set
External body made of stainless steel	set
Interior made of stainless steel (not applicable to shelves)	set
internal and external manufacture of stainless steel - INOX version (does not apply to shelves)	set
Price strips (set of 12 items)	set
Body painting according to the Mawi RAL	set
Set of wheels	set
Shelf hook	set
Illuminated top plafond	pcs
Aggregate mounted on the top	set
Version with no REM aggregate (standard thermostat)	set
Thermostatic expansion valve for factor R404a / R507 for REM version	pcs



+1 ... +10 °C

MODEL	DIMENSIONS (L x D x H) [mm]	SIZE OF SHELVES [mm]	QUANTITY OF SHELVES	CAPACITY OF CHAMBER	AMBIENT CONDITIONS [C/RH]
CC 2070 SGD (SCH 2000R)	2070 x 693 x 1990	605 x 485	12	1575	+15 ... +25 / 60%