

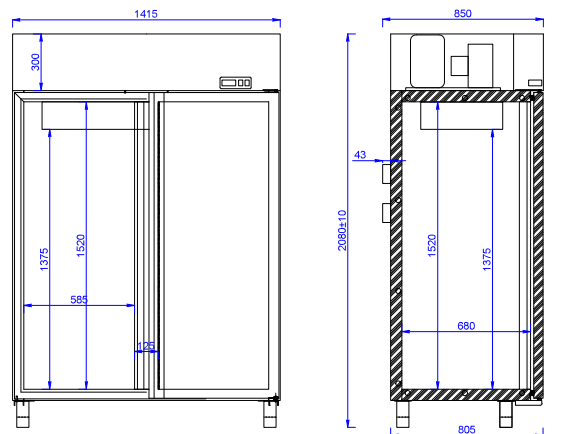


www.mawi-poland.pl

CC GASTRO 1400

STANDARD EQUIPMENT

- Refrigeration unit built-in
- Body insulated with polyurethane foam
- Full door insulated
- Dynamic cooling
- Electronic thermostat with digital display
- Automatic evaporation of condensate
- Interior of the cabinet made of aluminium sheet
- Outer body varnished in white
- Eight steel mesh shelves in white colour with adjustable height suspension
- Adjustable INOX legs



AVAILABLE OPTIONS

| OPTIONS | UNIT |
|---|------|
| Additional shelf with a set of hooks | pcs |
| Stainless steel perforated shelf | pcs |
| Interior made of stainless steel (not applicable to shelves) | set |
| External body made of stainless steel | set |
| Internal and external execution of stainless steel - INOX version (does not apply to shelves) | set |
| Body painting according to the Mawi RAL template | set |
| Door lock | pcs |
| Set of wheels | set |
| Version without REM unit (standard thermostat) | set |
| Thermostatic expansion valve for factor R404a / R507 for REM version | pcs |



+1 ... +10 °C

| MODEL | DIMENSIONS (L x D x H) [mm] | SIZE OF SHELVES [mm] | QUANTITY OF SHELVES | CAPACITY OF CHAMBER | AMBIENT CONDITIONS [C/RH] | REFRIGERANT (FOR VERSION WITH AGGREGATE) (PI) |
|----------------|-----------------------------|----------------------|---------------------|---------------------|---------------------------|---|
| CC GASTRO 1400 | 1415 x 850 x 2080 | 605 x 540 | 8 | 1338 | +15 ... +25 / 60% | R507 |