

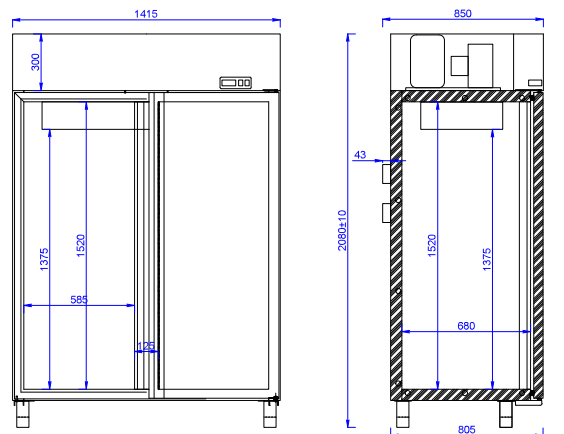


www.mawi-poland.pl

## FR GASTRO 1400 (SMR 1400)

### STANDARD EQUIPMENT

- Built-in freezing unit
- Gauge spacing adapted for GN containers
- Body is insulated with polyurethane foam full door insulated
- Dynamic cooling
- Electronic thermostat with digital display
- Automatic evaporation of condensate
- Interior of the cabinet made of aluminium sheet
- Outer body varnished in white
- Eight steel mesh shelves in white colour with adjustable height suspension
- Adjustable legs INOX



### AVAILABLE OPTIONS

OPTIONS	UNIT
Additional shelf with a set of guides	pcs
Stainless steel perforated shelf	pcs
Interior made of stainless steel (not applicable to shelves)	set
External body made of stainless steel	set
internal and external execution of stainless steel - INOX version (does not apply to shelves)	set
Body painting according to the Mawi RAL template	set
Door lock	set
Set of wheels	pcs
Version without REM unit (standard thermostat) thermostatic expansion	set
Thermostatic expansion valve for factor R404a / R507 for REM version	pcs



-18 ... -22 °C

MODEL	DIMENSIONS (L x D x H) [mm]	SIZE OF SHELVES [mm]	QUANTITY OF SHELVES	CAPACITY OF CHAMBER	AMBIENT CONDITIONS [C/RH]	REFRIGERANT (FOR VERSION WITH AGGREGATE) (PI)
FR GASTRO 1400 (SMR 1400)	1415 x 850 x 2080	605 x 540	8	1338	+15 ... +25 / 60%	R507